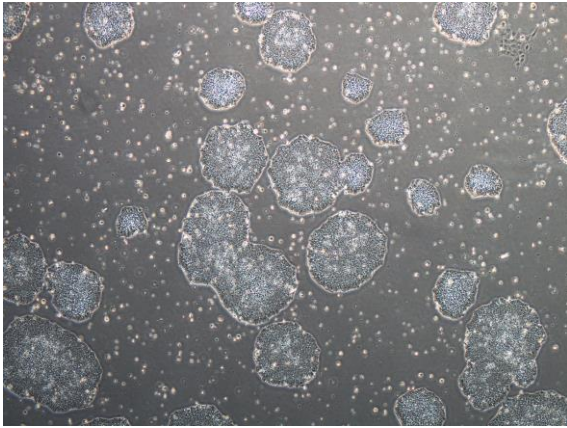
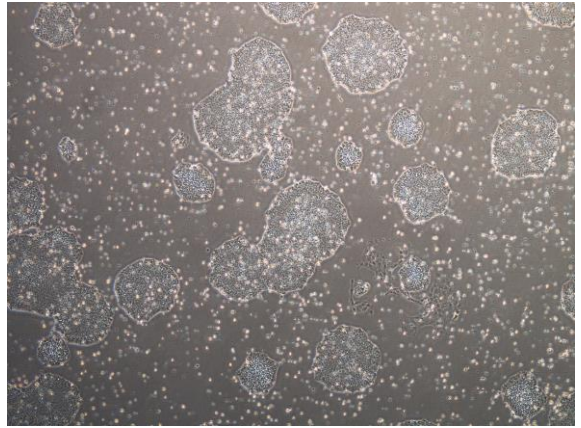


【 CiRA-j-1210 】 Morphology of iPSC colonies

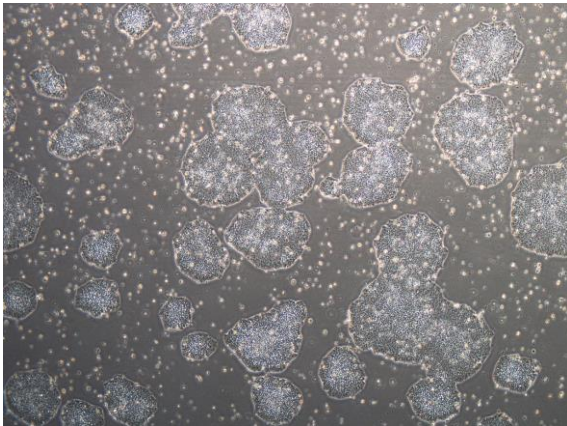
CiRA-j-1210-A: passage-2



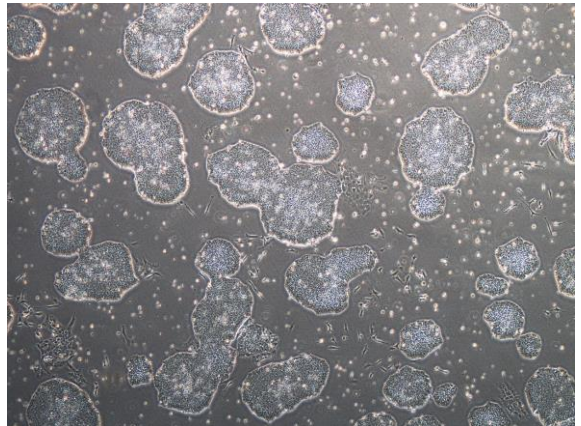
CiRA-j-1210-B: passage-2



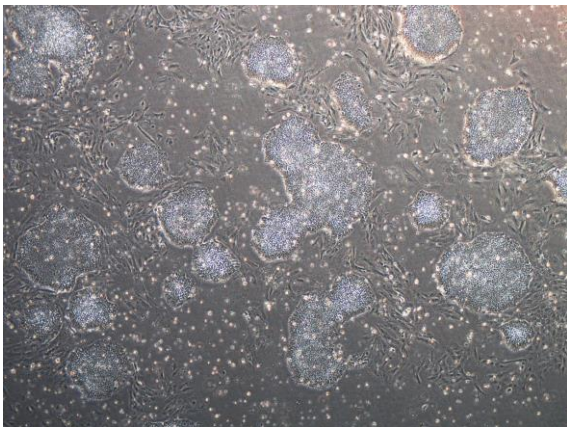
CiRA-j-1210-C: passage-2



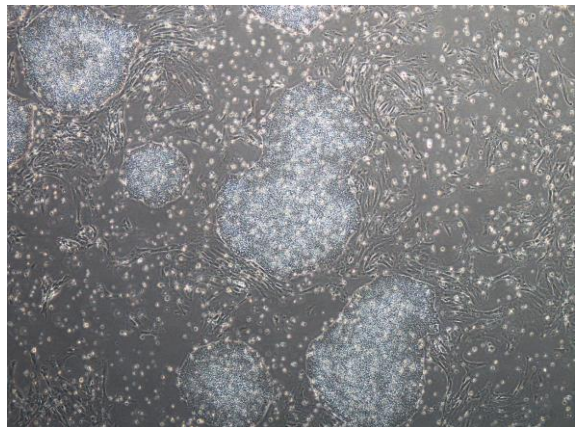
CiRA-j-1210-D: passage-2



CiRA-j-1210-E: passage-2



CiRA-j-1210-F: passage-2



(All images were captured at 4x magnification)